

XE60DA

Hydraulic Excavator

XCMG official Platform
www.machmall.com/
machmall@xcmg.com



Advanced Configuration

Ecological and economical

- ▶ Adopting new environmental friendly Yanmar engine, low speed torque, low fuel consumption, high operating efficiency, reliable and durable.
- ▶ It adopts a cross-stage large displacement constant power variable pump with high volumetric efficiency.

Excellent after-sales service

- ▶ Global after-sales service system and quick response mechanism
- ▶ Real-time technical consultation and maintenance

Multiple applications

- ▶ Short tail design and short slewing radius can achieve flexible operation in confined space
- ▶ Multiple additional configurations to adapt to a variety of operating requirements

Convenient maintenance

- ▶ Easy maintenance design, open the engine hood for no dead angle maintenance
- ▶ The high pressure quick coupler pipeline and the back-up pipeline with adjustable flow make you use at ease.

Comfortable operational experience

- ▶ Fresh air conditioning system to ensure the appropriate temperature
- ▶ Toughened glass cockpit with good safety view
- ▶ Detailed design concept improves comfort

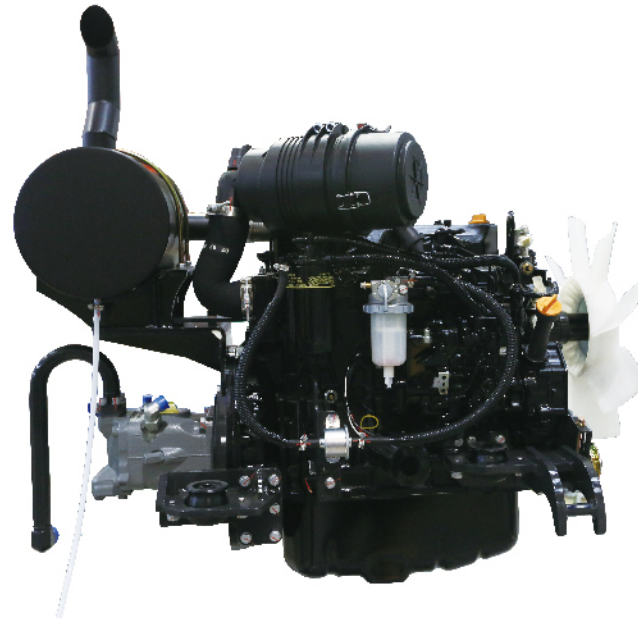
Safe and durable

- ▶ Integrated body design
- ▶ Strengthened structure and stress dispersing
- ▶ Upgrade undercarriage to improve load bearing performance



Ecological And Economical

- ▶ Adopting new environmental friendly Yanmar with low speed torque, low fuel consumption and high operating efficiency, reliable and durable. The arrangement of the intake line is optimized to reduce the intake resistance, increase the intake air quantity, and improve fuel utilization.
- ▶ It adopts a cross-stage large displacement constant power variable pump with high volumetric efficiency. By properly adjusting the pump power and adopting a new generation of main valve with lower pressure loss, the overall energy consumption is lower, the corresponding speed is faster, and the control is more precise.



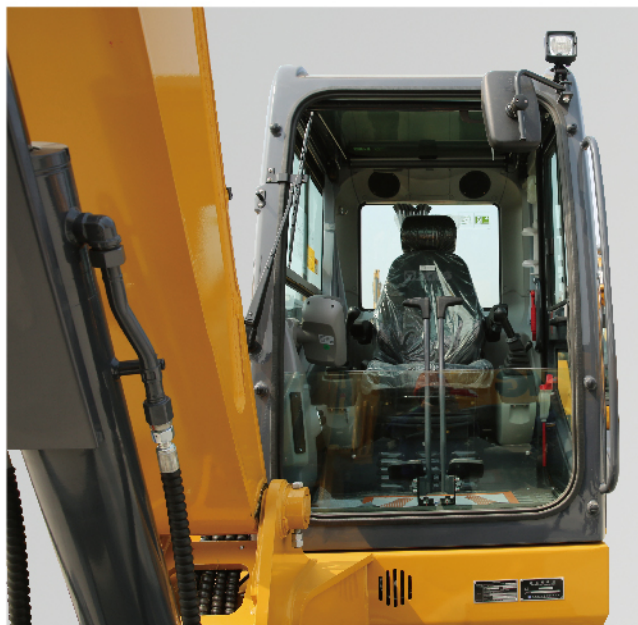
Comfortable And Safe

Comfortable

- ▶ The cab is simple, smooth, and more beautiful. The rear view is wider, and the cab is equipped with a new silicone oil shock absorber, which greatly reduces the fatigue of the driver's long-term operation and improves work efficiency. Increasing the glass sliding window on the right side of the cab and opening the left and right sliding windows of the cab can form convection of the wind. At the same time, it is convenient for the driver to communicate with people on both sides of the vehicle.



- ▶ The cab, undercarriage and console are integrated by adopting advanced welding technology, which greatly reduces indoor noise and ensures the comfort of operator.



Reliable

- ▶ 1.The oil pipe of the arm cylinder is arranged on both sides of the cylinder to prevent the cylinder pipe from being damaged due to excessive movement when the boom is lifted under the condition that the height is restricted.



- ▶ The layout of the three-inch working lights is reasonable, which ensures the safety of the operator's night work.
- ▶ Add a power relay protection box to prevent the power relay from being damaged by dust or rain. The high current fuse is placed near the battery to protect the entire vehicle circuit.
- ▶ Re-optimize the design of the boom and the arm, and further strengthen the key parts. The bucket tooth is mounted on the horizontal pin and adopts a new pin fixing method to effectively prevent the bucket tooth from falling off.
- ▶ The tailstock part of the rotary platform is mainly strengthened, and the box structure is adopted to increase the overall rigidity to prevent the tailstock from deforming after a long time of work. At the same time, the strength of the engine legs is increased to meet the severe working conditions of engine vibration during heavy load operation.

Maintenance And Service

- ▶ After the hood is opened, the maintenances of diesel engine filter and oil filter are within reach.
- ▶ A wide range of after-sales service system, quick-response rescue mechanism to ensure that you use at ease.
- ▶ The glass liquid water bottle is installed on the back side of the cab to facilitate the observation of the glass water level.
- ▶ The slewing motor gear oil filling port is led out to the fuel tank for easy filling of the gear oil, which reduces maintenance difficulty and greatly reduces maintenance man-hours.





Multiple Application Conditions

The short tail design with short slewing radius, it can realize complex operation together with upper structure slewing to ensure that the digging is parallel with wall surface in narrow space through the cooperation of upper structure slewing so as to easily deal with various operating conditions. Operation in narrow lane can also be done through the swing of the dozer blade.

With one set of high pressure quick coupler pipeline and two sets of back-up pipelines with adjustable flow, it can provide more attachment options and the adjustable flow control allows user to operate more smoothly.

Standard Equipment

Engine	Name of equipment	XE60DA
	Engine model	4TNV94L
	Emission level	National III
	Manual preheating	
	Air cleaner (equipped with air cleaner blockage indicator)	
	Double filter element of air filter	
	Air prefilter	
	Collector type engine oil filter	
	Collector type fuel main filter	
	Fan shroud	
	Radiator auxiliary water tank	
	Oil-water separator	
	Alternator	
	Soft shaft speed control	
	Control valve with main overflow valve	
	Pilot filter	
	Oil suction filter	
	Accumulator	
	Arm flow regeneration	
Hydraulic system	Hydraulic oil ISO VG 46	
	Spare valve plate	
	AM - FM radio with digital display	
	All - weather soundproof steel structure cab	
Cab and interior trim	Beverage cup holder	
	Two stereo speakers	
	Engine key switch	
	Emergency hammer	

Cab and interior trim	Fire extinguisher support	
	Front window washer	
	Cleanable floor mat	
	Footrest board	
	Luxury seat	
	Openable front upper windshield	
	Removable front and lower windshield	
	Tempered glass sliding door and window	
	Intermittent windscreen wiper	
	Seat belt	
	Control handle	
	Travel control pedal with detachable manual control lever	
	Coat and hat hook	
	High and low gears shift	
Safety and security configuration	Air conditioning system	
	Cigarette Lighter/Standby Power Supply	
	Top sunroof	
	Internal lighting in the cab	
	Document bag	
	Rearview mirror	
	LCD liquid crystal monitor	
	Driving door locks and cabin locks	
	Alarm horn	
	Parking brake for walking	
	Rotary parking brake	
	Battery circuit breaker	
	Hydraulic safety locking lever	
	Emergency escape hammer	

Safety and security configuration	Left and right rearview mirrors
	Front work light
Chassis system and shield	Track tensioning mechanism
	Bottom frame traction ring
	400 mm three-rib track shoe
	Bottom sealing plate of chassis
	Walking motor sealing plate
	Track clamp
Working device	Bulldozer shovel
	Supporting chain wheel and supporting wheel
	Boom
	Bucket rod
Electrical system	Bucket 0.23m3 (ISO full bucket)
	Battery (1× 90Ah)
	12V power interface
	Engine cooling water temperature display
	Fuel level display
	Engine speed display
	Working hour meter
	Engine oil pressure, engine overheat alarm
	Charging indication
	Air filter clogging alarm
Lighting lamp	Engine warm-up indication
	Hydraulic oil temperature alarm
Counterweight	Left boom working light
	Working light mounted in the cab

Optional Equipment

	Name of equipment	XE60DA
Hydraulic system	Hydraulic pipeline: breaking hammer	
	Hydraulic oil ISO VG 32, 68	
Cab and interior trim	Fire extinguisher	
Safety and security configuration	Roll over protection structure (ROPS)	
	Falling object protection structure (FOPS)	
Chassis system and shield	Track rubber block	
	Breaking hammer	
Working device	Bucket 0.08m3 (ISO full bucket)	
	Bucket 0.21m3 (ISO full bucket)	
	Bucket 0.25m3 (ISO full bucket)	
	Bucket 0.30m3 (ISO full bucket)	
Electrical system	12V cigarette lighter	

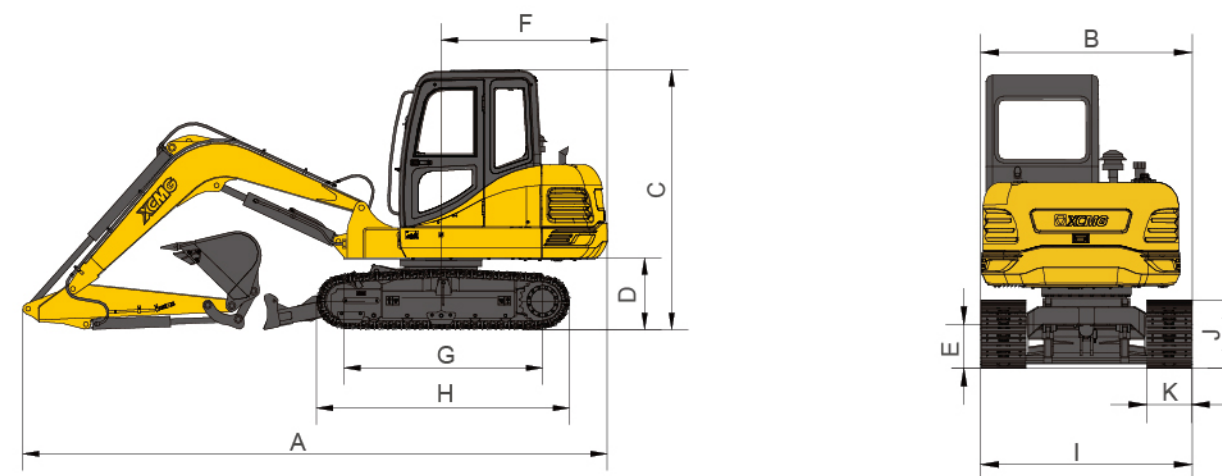
Main Specifications

Item	unit	Main specifications
Model	/	XE60DA
Operating weight	Kg	6010
Bucket capacity	m³	0.23
Engine	Model	4TNV94L-BVXG
	Direct injection	√
	Four strokes	√
	Water cooling	√
	Turbo-charging	×
	Air-to-air intercooler	√
	No.of cylinders	4

Item	unit	Main specifications	
Engine	Rated power	kw/rpm	36.2/2100
	Maximum torque/speed	N.m/rpm	207.4/1000
	Displacement	L	3.054
Main performance	Travel speed (H/L)	km/h	4.2/2.2
	Swing speed	r/min	10
	Gradeability	°	35
	Ground pressure	kPa	32.5
	Bucket digging force	kN	48.3
	Arm digging force	kN	32.5
	Maximum tractive force	kN	50.5
Hydraulic system	Main pump	/	/
	Rated flow of main pump	L/min	151.2
	Main safety valve pressure	MPa	24.5
	Travel system pressure	MPa	24.5
	Swing system pressure	MPa	23
	Pilot system pressure	MPa	3.5
Oil Capacity	Fuel tank capacity	L	110
	Hydraulic tank capacity	L	85
	Engine oil capacity	L	12
Standard	Length of boom	mm	3000
	Length of arm	mm	1600
	Bucket capacity	m³	0.23
Optional	Others	/	quartering hammer, rubber track block
	Bucket capacity	m³	0.2m³ Strengthen bucket 0.08m³Ditching bucket

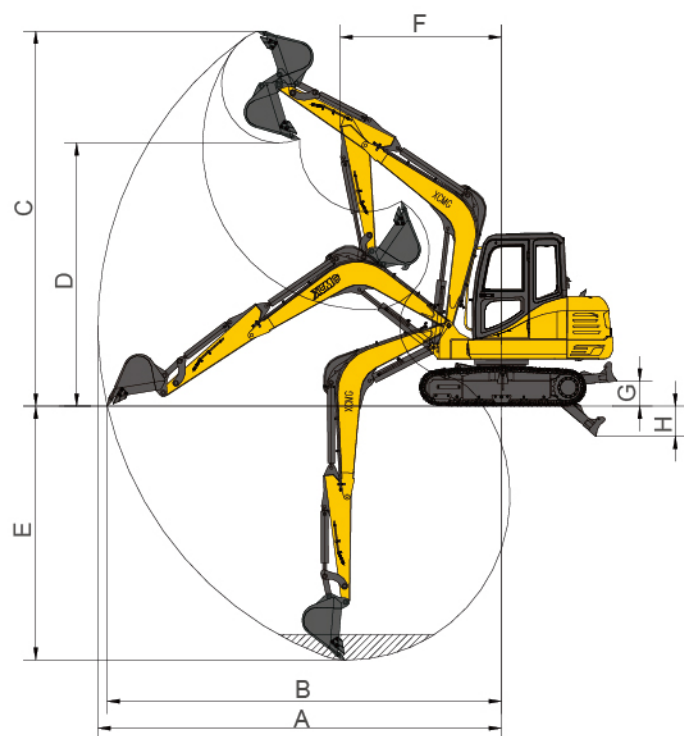
Dimensions

Item	Unit	Parameters
A Overall length	mm	5860
B Overall width	mm	1920
C Overall height	mm	2585
D Width of platform	mm	1780
E Overall width of chassis	mm	1920
F Track shoe width	mm	400
G Wheel gauge	mm	1990
H Track gauge	mm	1500
I Counterweight clearance	mm	700
J Minimum ground clearance	mm	385
Dozer blade (width / height)	mm	1920×340



Working Range

Item	Unit	Parameters
A Max. digging height	mm	5630
B Max. dumping height	mm	3945
C Max. digging depth	mm	3830
D Maximum depth cut for 2240mm(8 ft) level bottom	mm	2680
E Maximum vertical wall digging depth	mm	6130
F Max. digging radius	mm	2460
G Min. swing radius	mm	1670
Dozer blade maximum lifting height	mm	390
Dozer blade maximum digging depth	mm	560



Lifting Capacity

Lifting point height (m)	Rated lift capacity – Straight ahead (back) (kg)				Rated lift capacity – over-side (kg)			
	Lifting point radius (m)			Lifting capacity at maximum radius	Lifting point radius (m)			Lifting capacity at maximum radius
	1.5	3	4.5		1.5	1.5	1.5	
4.5				*990				870
3			870	750			630	530
1.5		1640	830	630		1160	580	430
Ground		1500	780	640		1030	540	440
-1.5	*2370	1480		810	*2370	1010		560

Capacities marked with an asterisk(*) are limited by hydraulic capacities.



Machmall.com is an electromechanical product platform officially launched by XCMG, aiming to provide global customers with a complete set of high-quality construction machinery solutions and supporting equipment.

Xuzhou Construction Machinery Group Co., Ltd. (XCMG Group), founded in 1943, is the fourth largest worldwide construction machinery manufacturer and the largest in China with products covering 183 countries and regions.

XCMG have 12 complete solutions: Crane lifting, Mining Construction, Earth-moving Solutions, Road Machinery, Concrete Equipment, Tunnel and Underground Space Construction, Mobile Elevating Work Platform (MEWP), Piling and Non-excavation Equipment, Transportation Equipment, Environmental Sanitation Equipment, Firefighting, Safety and Emergency Rescue

徐工徐工，助您成功

— XCMG for your success —



<https://www.machmall.com/>



machmall@xcmg.com



008618652183963
86-516 8773 9797

